

# Carbon Reduction Plan

**Supplier Name:** Summerhill Services Ltd

**Publication date:** 20 May 2026

## Commitment to Net Zero:

Summerhill Services Ltd is committed to achieving Net Zero emissions by 2045.

Summerhill Services Ltd (SSL) is a wholly owned subsidiary of Birmingham and Solihull Mental health NHS Foundation Trust (BSMHFT). SSL is committed to the NHS Carbon Net Zero multiyear plan.

## Baseline emissions footprint:

Baseline emissions are a record of the greenhouse gases that have been produced in the past and were produced prior to the introduction of any strategies to reduce emissions.

Baseline emissions are the reference point against which emissions reduction can be measured.

|                               |
|-------------------------------|
| <b>Baseline Year:</b> 2019/20 |
|-------------------------------|

|  |
|--|
| <b>Additional details relating to baseline emissions calculations:</b> |
|--|

|  |
|--|
| SSL is a wholly owned subsidiary of BSMHFT. Hence the carbon emissions reported is not solely for SSL and is for the entire BSMHFT Organisation. |
|--|

|   |
|---|
| The National NHS baseline year is 1990 and thus progress against interim targets set by NHS can only be recognised Nationally as many NHS Trusts, including BSMHFT, did not exist at that time. |
|---|

|   |
|---|
| The baseline year for BSMHFT is 2019/20 due to this being the last year of normal data pre COVID. |
|---|

|   |
|---|
| Please note the below data has been classified into Scope 1,2 & 3 via GHG protocol definitions, not national NHS definitions. |
|---|

|   |
|---|
| <b>It should be noted that the quality of data back in 2019/20 suggests that the scope 3 was significantly understated.</b> |
|---|

|  |
|--|
| There is no data available for downstream transportation and distribution. However, we have an additional category of patient and visitor travel which is included in the NHS Carbon Footprint Plus. |
|--|

|   |
|---|
| <b>Baseline Year emissions (tCO<sub>2</sub>e)</b> |
|---|

|                       |
|-----------------------|
| <b>Scope 1:</b> 5,059 |
|-----------------------|

|                       |
|-----------------------|
| <b>Scope 2:</b> 3,112 |
|-----------------------|

|                 |
|-----------------|
| <b>Scope 3:</b> |
|-----------------|

|   |
|---|
| Upstream transportation and distribution (Supply Chain): 23,596 |
|---|

|                                   |
|-----------------------------------|
| Waste generated in operations: 41 |
|-----------------------------------|

|                      |
|----------------------|
| Business travel: 563 |
|----------------------|

|                           |
|---------------------------|
| Employee commuting: 2,323 |
|---------------------------|

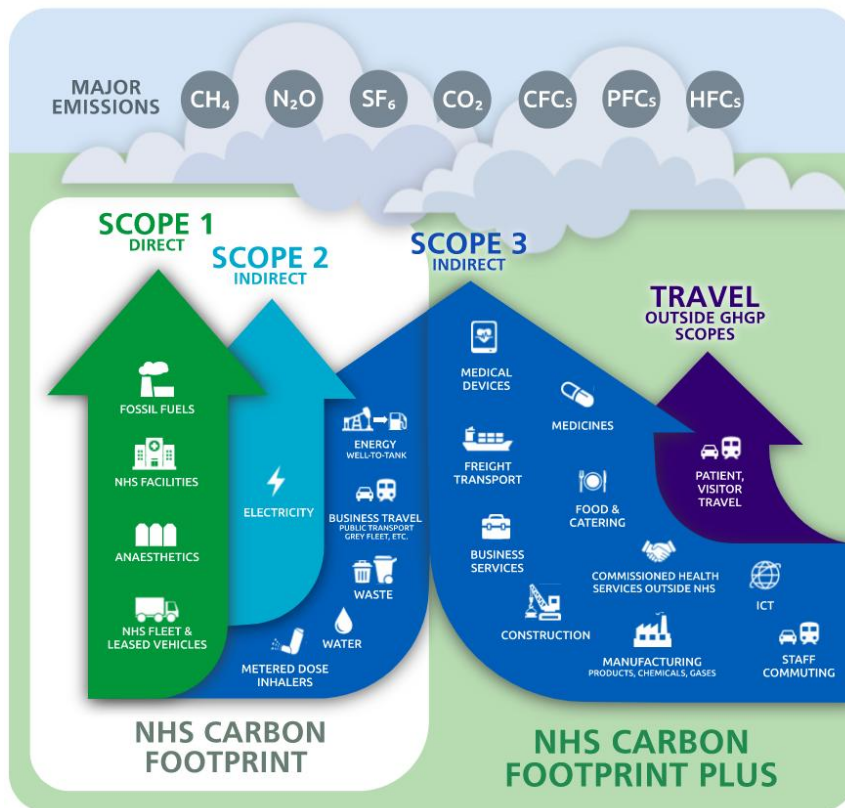
|   |
|---|
| Downstream transportation and distribution: No data available |
|---|

|                                   |
|-----------------------------------|
| Patient and visitor travel: 1,492 |
|-----------------------------------|

|                      |
|----------------------|
| <b>Total: 36,187</b> |
|----------------------|

## Current emissions reporting:

The following GHG protocol categories are not reported individually/ directly in the NHS England Carbon Net Zero strategy (approved by Government / Department of Health). Instead, all NHS Trusts are required to publish Green Plans that focus on a Net Zero NHS. This mandating two main targets areas NHS Carbon Footprint and NHS Carbon Footprint plus. These in turn cover all scope 1,2 and 3 emissions but in line with the following:

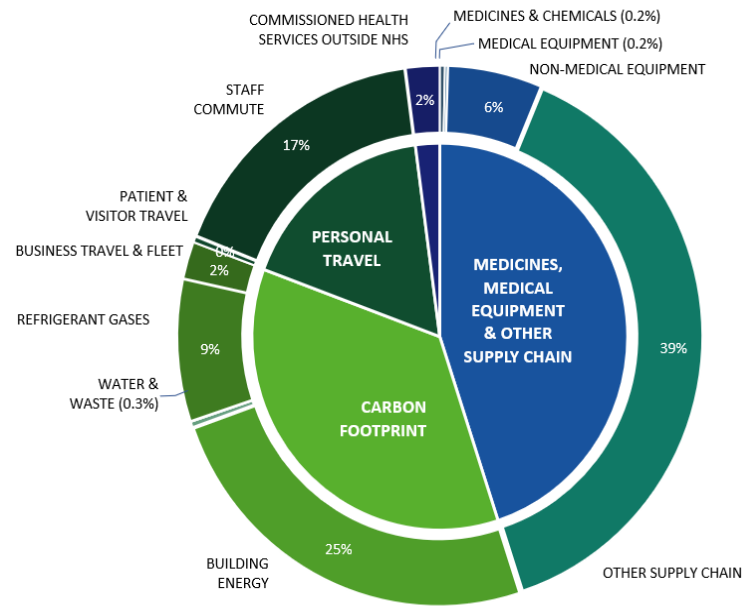


For more information read [Our Green Plan](#) here: [Our Trust Five Year Strategy - Birmingham and Solihull Mental Health NHS Foundation Trust](#)

|  |
|--|
| <b>Reporting Year:</b> 2025/26                                 |
| <b>Emissions (tCO<sub>2</sub>e)</b>                            |
| <b>Scope 1:</b> 6,379  |
| <b>Scope 2:</b> 559  |
| <b>Scope 3:</b>  |
| Upstream transportation and distribution (Supply Chain): 9,867 |
| Waste generated in operations: 71                              |
| Business travel: 469   |
| Employee commuting: 3,549                                      |
| Downstream transportation and distribution: No data available  |
| Patient and visitor travel: 72                                 |
| <b>Total: 20,966</b>   |

Please see 'Our Carbon Pie' below for the reporting year:

| Summary (tCO <sub>2</sub> e)                                 | 2025/26       | % of tCO <sub>2</sub> e |
|--|---------------|-------------------------|
| Medicines & Chemicals  | 66            | 0.3%                    |
| Medical Equipment  | 35            | 0.2%                    |
| Non-Medical Equipment  | 1,223         | 5.8%                    |
| Other Supply Chain   | 8,107         | 38.7%                   |
| Building Energy  | 5,146         | 24.5%                   |
| Waste & Water  | 71            | 0.3%                    |
| Anaesthetic Gases & Inhalers                                 | 0             | 0.0%                    |
| Refrigerant Gases  | 1,792         | 8.5%                    |
| Business Travel & NHS Fleet                                  | 469           | 2.2%                    |
| Patient & Visitor Travel                                     | 72            | 0.3%                    |
| Staff Commuting  | 3,549         | 16.9%                   |
| Commissioned Health Services                                 | 436           | 2.1%                    |
| <b>Medicines, Medical Equipment &amp; Other Supply Chain</b> | <b>9,431</b>  | <b>45.0%</b>            |
| <b>Carbon Footprint</b>                                      | <b>7,478</b>  | <b>35.7%</b>            |
| Personal Travel  | 3,621         | 17.3%                   |
| Commissioned Health Services Outside NHS                     | 436           | 2.1%                    |
| <b>NHS Carbon Footprint</b>                                  | <b>7,478</b>  | <b>35.7%</b>            |
| <b>NHS Carbon Footprint Plus</b>                             | <b>13,488</b> | <b>64.3%</b>            |
| <b>Total</b>   | <b>20,966</b> |                         |



### Emission reduction targets:

The NHS was the first National Health system to commit to become 'Carbon Net Zero' by adopting a multiyear plan with clear deliverables and milestones. The plan sees the NHS formally adopt two key targets, these being:

- For the NHS Carbon footprint (emissions under its direct control) to be net zero by 2040 with an ambition for an interim 80% reduction being achieved by between 2028 and 2032.
- For the NHS Carbon footprint Plus (emissions which also includes wider supply chain) to be net zero by 2045 with an ambition for an interim 80% reduction by between 2036 and 2039.

SSL is committed to achieving these targets in line with the NHS.

### Carbon reduction projects:

Electricity – All directly procured electricity being purchased from low / zero Carbon sources.

Electricity and Gas – A combined 5% reduction in consumption in 2025/26 against 2024/25 representing a notional cost avoidance of circa £250K

Grant Funding. The Trust (SSL on behalf of) being successful in achieving £271K Capital Grant funding to enable (working with Amey) the installation of Solar Photovoltaic systems at both Little Bromwich and Northcroft. A significant achievement enabling the

generation of true Green energy at 2 of the Trust sites from 26/27 onwards – a first for BSMHFT

Electric Fleet – having circa 40% of the Trust General Transport fleet vehicles now being EV / Hybrid EV.

Public Transport – Since the partnership with Travel for West Midlands began circa 2 years ago the incentives associated with free 4-week taster passes for new starters along with incentives for existing staff plus supported patient travel has seen over 1,000 persons having taken up at least one of the opportunities. This leading to over 47,000 journeys and an estimated 7 tonnes of CO<sub>2</sub> being saved – A massive achievement and very well done to all involved in making this happen!

New Hospital- Work is well underway now to deliver our New Hospital located at our Highcroft site in Erdington. This new development will achieve the BREEAM (environmental standards) Excellent mark in terms of its design and build, will be as energy efficient as it can be and will include (it is planned) both a Decarbonised heat supply and onsite Solar power generation

Waste – 0% of all waste arising going to landfill. Having also introduced food waste recycling at Trust sites. With this food waste being used to generate heat and energy via anaerobic digestion.

Working across the ICS the introduction of an affordable furniture re-use platform will allow BSMHFT and SSL staff to advertise good condition furniture for reuse across the estate instead of simply disposing of it as not needed.

SSL Non-Emergency Patient transport – Have focused on reducing the number of aborted jobs (where vehicles have travelled to collect a passenger only to be cancelled at point of collection) reducing these aborted jobs from an average of 6.5 jobs per day to an average now of 2.5 jobs a day - again saving resources, costs and carbon.

SSL General Transport – continually reviewing and developing routes and processes so as to reduce mileage and carbon Impact and in turn mitigate the mileage associated with return / empty journeys. Aim is not to have 'dry' / empty runs. Including the introduction of 'Podfather' for route optimisation and paperless despatch.

SSL Warehouse – several initiatives introduced by the SSL warehouse management team including the bulk ordering of goods to reduce costs and journeys, centralised mattress purchasing and storage and distribution for the Trust, using green packaging for despatch, heat sealing items instead of using tape, reusing cardboard as needed, using paper tape instead of plastic and uniform recycling to name just a part of the sustainability commitment.

Our Carbon Jigsaw – being BSMHFT new webpage re Carbon and Sustainability that is being launched. The webpage in the format of a jigsaw gives how meeting our green

objectives is a 'puzzle' with so many pieces that need to fit together to really make sustainable change happen (how every small step and intervention represents 1 piece of the 'puzzle').

**Sustainable Travel Plan (STP)** – A comprehensive STP has been developed by SSL on behalf of the Trust which has also more recently been approved by FPP on behalf of the Trust Board. The Sustainable Travel Plan including annex's by location making it also relevant at a site level, prioritising that modal shift and drilling down to specifics such as cycle routes, walking opportunities and public transport services and incentives

**Workforce** – All Trust and SSL Job Descriptions now mandate that all new starters must support Sustainability practices and the Green Agenda. In addition, staff have the option to join salary sacrifice schemes that support both cycling and / or the purchase of EV's / Hybrid EV's.

**CAFM** – A new Computer Aided Facilities Management system helping support real time works allocation and paperless process improving efficiencies and reducing wastage. This linked to Electronic Food ordering system being introduced improving quality and reducing wastage in terms of paper, time and food wastage. Leading to quality improvements.

### **Future Carbon reduction initiatives:**

Our priority is to implement Our Green Plan which contains an action plan over 4 years on how we will reduce our carbon emissions.

The actions that SSL aim to lead include:

- To provide relevant, timely and effective communication across the Trust re Sustainability works/projects.
- To ratify the Sustainable Travel Plan which provides information on all of the walking, cycling, bus and train routes for our sites.
- To refresh and replace fleet vehicles with the most Carbon efficient and fit for purpose vehicles available.
- Review cycling infrastructure across all BSMHFT sites and assess the need for: bike shelters, lockers, showers and incentives.
- Develop a heat decarbonisation plan (HDP), which aims to replace fossil fuel heating systems with lower carbon alternatives.
- Ensure all applicable new buildings and major refurbishment projects are compliant with the NHS Net Zero Building Standard.
- Ensure that Sustainability is considered in significant decision making, policy and investment.
- Have our Climate Change Adaption Plan ratified.

- To move to segregate clinical waste in line with NHS Waste Strategy (60/20/20 targets) – increasing use of offensive non-hazardous waste and reducing reliance on orange bagged hazardous.
- To reduce idling of vehicles within the estate.

**Declaration and sign off:**

**Name: Neil Hathaway**

**Title: Director of Operations**

**Date: 08/05/2026**

