

Carbon Reduction Plan

Supplier Name: Summerhill Services Ltd

Publication Date: 21st August 2025

Commitment to achieving Net Zero:

Summerhill Services Ltd is committed to achieving Net Zero emissions by 2040.

Baseline Emissions Footprint:

Baseline emissions are a record of the greenhouse gases that have been produced in the past and were produced prior to the introduction of any strategies to reduce emissions. Baseline emissions are the reference point against which emissions reduction can be measured.

Baseline Year: 2019/20	
Additional Details relating to the Baseline Emissions calculations.	
<p>Summerhill Services Ltd is as previously shared a subsidiary (wholly owned) of Birmingham and Solihull Mental Health NHS Foundation Trust (BSMHFT). Hence the Green Plan and Carbon targets are for the BSMHFT Group and not for solely SSL</p> <p>The NHS has committed to being Carbon Net Zero by 2040 (2045). This being considered by many to be very aspirational given UK Governments 2050 commitments. The NHS baseline year however is 1990 and thus progress against interim targets set by NHS at 2030/32 can only be recognised Nationally as many (most) NHS Trust did not exist at that time.</p> <p>The baseline year for BSMHFT being 2019/20 (last year of normal data pre COVID).</p> <p>The baseline for scope 1 and scope 2 has been merged to replicate the NHS approach being NHS Carbon Footprint (scope 1 and 2) and NHS Carbon footprint Plus (scope 3).</p>	
Baseline year emissions:	
Emissions	TOTAL (tCO₂e)
Scope 1 (NHS Carbon Footprint)	8,766

Scope 2	Included in scope 1 above
Scope 3 NHS Carbon Plus - (Included Sources)	27,411
Scope 3 Category 4 Upstream transportation and distribution	0 (not directly and separately recorded)
Scope 3 Category 5 Waste generated in operations	0 (not directly and separately recorded)
Scope 3 Category 6 Business travel	0 (not directly and separately recorded)
Scope 3 Category 7 Employee commuting	0 (not directly and separately recorded)
Scope 3 Category 9 Downstream transportation and distribution	0 (not directly and separately recorded)
Total Emissions	36,187

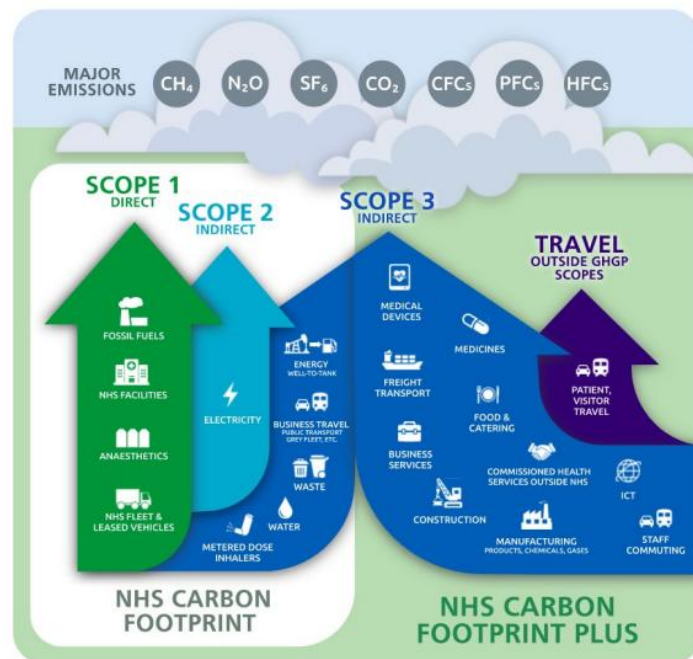
Current Emissions Reporting

Reporting Year: 2023/24	
Emissions	TOTAL (tCO₂e)
Scope 1	5,041

Scope 2	Included in scope 1 above
Scope 3 (Included Sources)	49,168
Total Emissions	54,209

NB. It should be noted that the quality of data back in 2019/20 suggests that the scope 3 was significantly understated

The following GHG protocol categories are not reported individually/ directly given the NHS England Carbon Net Zero strategy (approved by Government / Department of Health) for the NHS to develop Green Plans that focus on a Net Zero NHS. This mandating two main targets areas NHS Carbon Footprint and NHS Carbon Footprint plus. These in turn cover all scope 1,2 and 3 emissions but in line with the following:



It is also recognised that the baseline reported at 2021 for 2019/2020 was not as complete as it could have been but included the data that was available at that time, being Carbon Footprint baseline.

Emission source	Emissions Scope	2019/20	
		Consumption	tCO ₂ e
Natural Gas in kWh	1, 3	22,984,359	4,775
Electricity - grid supplied (location based) in kWh	2, 3	9,850,040	3,112
Electricity - zero / low-carbon (market based) in kWh	2, 3	n/a	n/a
Water Consumption m ³ (inc. water treatment emissions)	3	96,896	99
Waste Arisings in tonnes	3	991	41
Fleet Vehicles in litres of fuel	1, 3	58,119	185
Business Travel, inc. Grey Fleet in km	3	2,455,410	563
Metered Dose Inhalers in number prescribed	3	TBC	-
Anaesthetic Gases in litres used	1	n/a	n/a
TOTAL tCO₂e			8,776

Carbon Footprint Plus baseline

Emission source	Emissions Scope	2019/20	
		Consumption	tCO ₂ e
Staff Commuting in km	3	22,217,736	2,323
Patient and Visitor Travel in km	Out of scope	12,235,879	1,492
Supply Chain in £ spent (spend-based methodology: tCO ₂ e/£)	3	41,812,367	23,596
TOTAL tCO₂e			27,411

At 2023/24 last full year of authorised data (as 24/25 data from ERIC consumption data not yet confirmed Nationally by NHS England)

Carbon Footprint

BSMHFT Carbon Footprint	2019/20	2019/20	2020/21	2020/21	2021/22	2021/22	2022/23	2022/23	2023/24	2023/24
Emission Source	Consumption	tCO ₂ e	Consumption	tCO ₂ e	Consumption	tCO ₂ e	Consumption	tCO ₂ e	Consumption	tCO ₂ e
Natural Gas in kWh	22,984,359	4,775	24,573,531	5,106	23,354,799	5,010	23,157,645	5,001	21,967,297	4,018
Electricity - grid supplied in kWh	9,850,040	3,112	0	0	0	0	0	0	0	0
Electricity - zero / low carbon in kWh	0	0	9,053,331	498	8,506,105	672	8,686,006	589	8,544,270	579
Water Consumption M3 (inc. treatment)	96,896	99	92,405	94	92,821	38	99,216	40	121,454	49
Waste Arisings in tonnes	991	41	820	39	845	49	932	39	903	22
Fleet Vehicles in litres of fuel	58,119	185	55,091	172	57,431	178	56,349	177	63,108	165
Business Travel, inc. Grey Fleet in miles	2,455,410	563	1,089,634	236	1,184,535	261	1,184,535	261	1,287,242	208
TOTAL tCO₂e		8,775		6,145		6,208		6,107		5,041

NHS Carbon Footprint plus

Commuting	7,956
Supply Chain / procurement	27,077
Supply Chain / Commissioned services	14,135

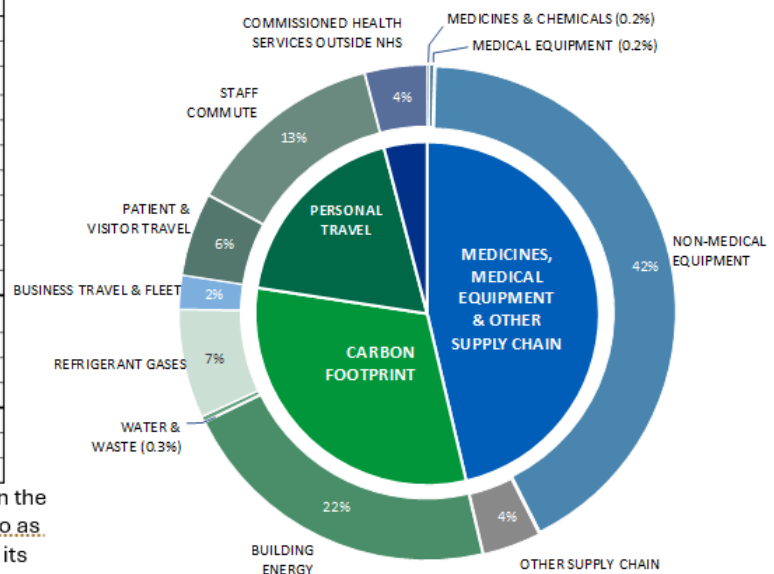
Total 49,168

Note. Our New Green Plan 2025 to 2029– final draft is with NHS E with an agreed deadline of 31st Oct 2025 (currently being reviewed by BSMHFT Trust Board and ICS Board). It's being revised and contains far more detailed Carbon analysis including refrigerants. It also has improved baseline changed as data availability.

Carbon data will still include the NHS Carbon Footprint and Carbon Footprint plus but will have far more detail to include.

By way of continuous improvement, the BWCFT (Birmingham Women's and Children's Foundation Trust) Carbon tool has been used across the ICS to support a joined-up approach to enable the opportunity for consistent sets of data. This including scope 1 and 2 emissions (which now include refrigerants and estimated patient travel data) along with the scope 3 procurement and contracting data from 'eclass'.

Summary (tCO ₂ e)	2024/25	% of tCO ₂ e
Medicines & Chemicals	39	0.2%
Medical Equipment	62	0.2%
Non-Medical Equipment	10,626	42.2%
Other Supply Chain	950	3.8%
Building Energy	5,397	21.4%
Waste & Water	82	0.3%
Refrigerant Gases	1,791	7.1%
Business Travel & NHS Fleet	555	2.2%
Patient & Visitor Travel	1,368	5.4%
Staff Commuting	3,300	13.1%
Commissioned Health Services	1,021	4.1%
Medicines, Medical Equipment & Other Supply Chain	11,677	46.4%
Carbon Footprint	7,825	31.1%
Personal Travel	4,668	18.5%
Commissioned Health Services Outside NHS	1,021	4.1%
NHS Carbon Footprint	7,825	31.1%
NHS Carbon Footprint Plus	17,366	68.9%
Total	25,191	



The Trust needs to 'reset' its position based on the more accurate and complete data available so as to allow the Trust to record progress and map its trajectory.

9

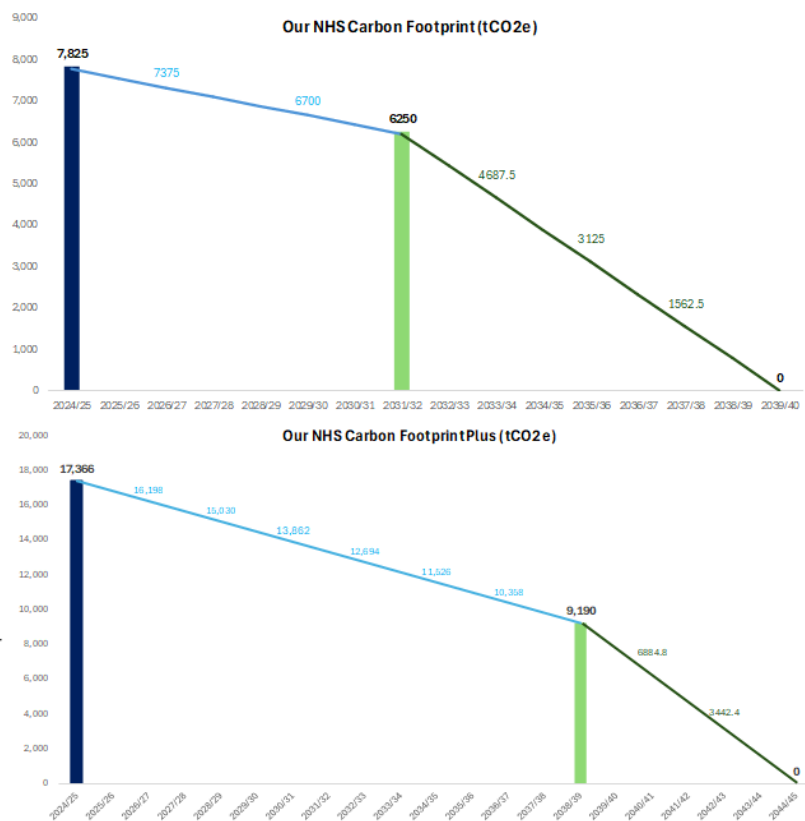
Carbon Our Future

Using Our Carbon Tool, our Carbon future will need to be reviewed annually (post ERIC each year) to track progress and ever-changing metrics. Detailed calculations (data available on request) have been completed try to normalise the data in line with NHS E target trajectories and the complex data analysis undertaken via the Carbon tool.

This meaning the BSMHFT Carbon Footprint at April 2025 is 7,825 tonnes and our Carbon Footprint Plus is 17,366 tonnes. Giving a total footprint of 25,191 tonnes.

Our re calculated Carbon Footprint target at 2032 being 6,250 tonnes meaning that BSMHFT needs to reduce its scope 1 carbon by 1575 tonnes or 20%. This equating to an annual Carbon reduction target of upwards 3% per annum.

Please see the Carbon Footprint and Carbon Footprint Plus normalised trajectories.



10

Emissions Reduction Targets

The NHS has clear Net Zero targets as outlined in the 'Delivering a Net Zero National Health Service'.

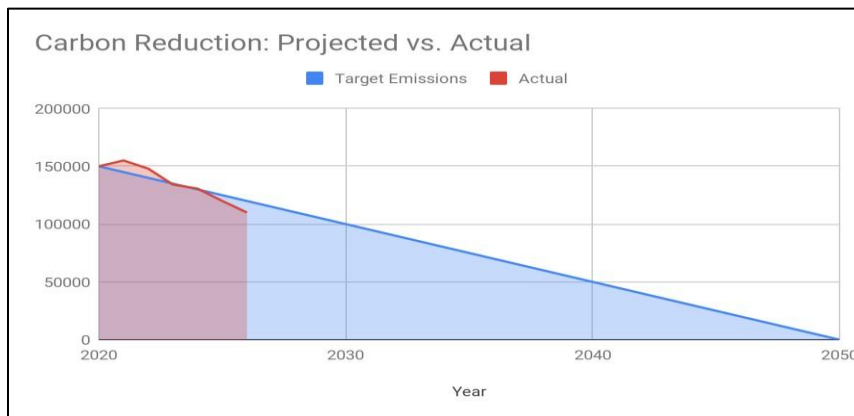
- The NHS Carbon footprint for the emissions under direct control, net zero by 2040
- The NHS Carbon Footprint Plus for the emissions under influence, net zero by 2045

These being against a 1990 baseline

To continue progress to achieving Net Zero, we have adopted the following carbon reduction targets.

At this stage the Green Plan for BSMHFT is being re-written and will include if and as necessary targets towards the NHS Carbon Net Zero targets.

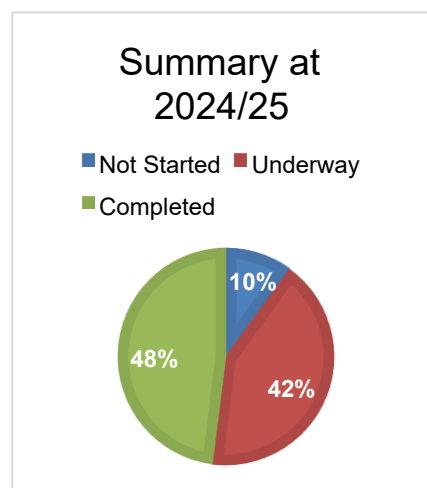
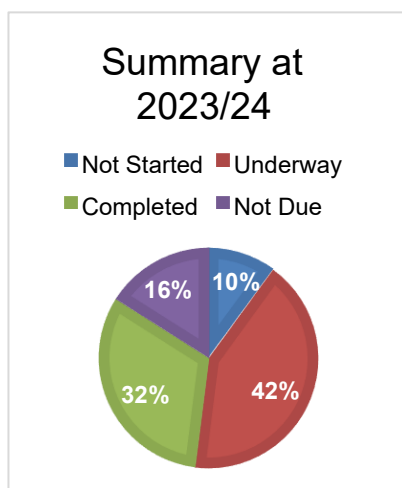
Progress against these targets can be seen in the graph below:



Carbon Reduction Projects

Examples of Achievements to Date

Please see below comparison of the plan at 2023/24 and at 2024/25 years ends summarising the progress against workstreams with nearly 50% being completed.



Achievements 2024/2025

Expanding in a little more detail, please see below examples of the many interventions: -

Electricity – All directly procured electricity being purchased from low/ zero Carbon sources.

Public Transport – 4-week free Public Transport taster passes being offered for all new starters and 10% cost reduction of Travel passes for NHS staff, 2024/25 has seen an

incredible 4008 journeys undertaken where codes have been redeemed over the past 12 months.

Public Transport – A scheme at this time offered within ICCR to allow patients within deprived areas free public transport travel to and from appointments. Hopefully impacting positively on non-attendance at appointments. At this time over 2,200 journeys have been made by patients who have redeemed codes.

Waste – Less than 1% of all waste arising going to landfill. Having also introduced food waste recycling at Trust sites. With this food waste being used to generate heat and energy via anaerobic digestion.

Electric Fleet – having circa 35% of the Trust General Transport fleet vehicles now being EV / Hybrid EV.

Heat Decarbonisation – Having bid for and been successfully awarded over £660K of revenue funding SSL have engaged with specialist contractors, Dalkia to develop detailed designs pertaining to the decarbonisation of the heat supply at 5 of our Trust sites. These designs, if to be implemented, will deliver significant carbon savings but will require several £millions of capital to make happen.

Laundry – The new contract led and introduced by SSL has seen the appointment of a provider with strong Carbon credentials, using a lower temperature wash system and mitigating the need for polythene wrapping on laundry.

Dressings/ Tissue Viability eradication of wastage – In creating a central purchasing, storage and distribution service for these products has seen financial and environmental efficiency savings and waste avoidance. Over ordering has stopped, leading to less wastage with products not going beyond expiry dates or being incorrectly ordered. Also allowing from point of order to final delivery normally within 2 working days maximum – representing service quality improvement for Clinical teams.

Recruitment – Moved to 'e' recruitment via 'On base' for new starters alone saving more than 20,000 pieces of paper per annum (plus the additional purchase storage, transportation and disposal costs and carbon impact).

SSL General Transport – continually reviewing and developing routes and processes to reduce mileage and carbon Impact and in turn mitigate the mileage associated with return / empty journeys. Aim is not to have 'dry' / empty runs.

Travel - The Trust needs to understand the Travel basis and needs of its workforce so that it can help to plan for that necessary 'modal' shift away from the car and specifically the combustion engine. A Travel survey being completed in 2024/25. With results being reviewed in conjunction with the early stages of development of a Trust wide Travel plan.

Communications – A booklet for 'new starters' to be shared at inductions (Trust and SSL) has been developed. In addition, the webpage including 'Carbon Jigsaw' is being developed.

Workforce – All Trust and SSL Job Descriptions now mandate that all new starters must support Sustainability practices and the Green Agenda. In addition staff have the option to

join salary sacrifice schemes that support both cycling and/ or the purchase of EV's / Hybrid EV's.

Future Carbon Reduction Initiatives

In the future we hope to implement further measures such as:

Priorities for 2025/26 being to continue to make the Green Plan happen. To further embed its targets and messages into everyday business / business as usual.

More specifically this will include but not be limited to:

Energy – Working with BSol procurement and NHS E to enable electricity and gas procurement to benefit from Crown Commercial Services best value contracts (moving to 50% low to Zero Carbon and 50% Renewables).

Commence work with BSol procurement on ICS wide waste tenders (for 2026 contracts) – aiming to deliver financial and environmental best value across the System.
Continue to support Staff across BSMHFT and SSL to help them feel that they can make a difference, make positive changes, trying to keep ideas and communications 'fresh and real'.

SSL will continue with the support of the Trust the significant improvements being made to the Estate from a Sustainability perspective (as well as comfort and quality). These including triple glazed windows upgrades, LED lighting upgrades and improvements to insulation and building fabrics – the challenge as always being funding.

The Trust needs to embrace Climate Change Adaption and start to plan how its Services and Buildings can where necessary be adapted to meet climate needs, mitigating the impact on its staff, patients and others.

Travel Plan being developed to help support the modal shift away from the combustion engine car to more sustainable forms of transport.

Decarbonising of Heat supply – This is a massive challenge to the NHS and BSMHFT. The Trust will need to continue to plan for the decarbonisation of the estate recognising the very significant capital costs and additional recurring revenue costs of such heat supply. Where feasible and where resource permit then the Trust (SSL) should continue to bid for funding / grants to as to help restrict the impact on already stretch capital resources. Heat Decarbonisation should not be seen as a project instead it should become BAU.

Waste - to continue to support the waste management hierarchy and new legislation re the need for greater dry waste recycling by introducing waste recycling schemes and where applicable additional food waste recycling initiatives.

Furniture Re-use platform – to develop a system where teams within our organisation can exchange furniture for re-use rather than disposal. This will reduce the amount of furniture waste and will add a Financial and Carbon benefit.

Sustainability Impact Assessment – Decisions (procurement, services, policies) are made within BSMHFT very often without considering the negative environmental impact. The

purpose of the Sustainability Impact Assessment (final draft stage) being to raise awareness and ensure those making the decision (whatever that decision may be and where significant) to stop and think about the environmental impact and to help create awareness and influence cultural / behavioural change.

From a Procurement perspective to continue to work with suppliers and the wider supply chain to reduce/ remove single use plastic items from the Trust.

This aligned with making better use of the resources that are procured/ re using them where possible within the Trust and avoiding whenever possible wastage.

Declaration and Sign Off

This Carbon Reduction Plan has been completed in accordance with PPN 006 and associated guidance and reporting standard for Carbon Reduction Plans.

Emissions have been reported and recorded in accordance with the published reporting standard for Carbon Reduction Plans and the GHG Reporting Protocol corporate standard¹ and uses the appropriate Government emission conversion factors for greenhouse gas company reporting².

Scope 1 and Scope 2 emissions have been reported in accordance with SECR requirements, and the required subset of Scope 3 emissions have been reported in accordance with the published reporting standard for Carbon Reduction Plans and the Corporate Value Chain (Scope 3) Standard³.

This Carbon Reduction Plan has been reviewed and signed off by the Board of Directors (or equivalent management body).

Signed on behalf of the Supplier:



Neil Hathaway
Director of Operations SSL

Date: 21st August 2025

¹ <https://ghgprotocol.org/corporate-standard>

² <https://www.gov.uk/government/collections/government-conversion-factors-for-companyreporting>

³ <https://ghgprotocol.org/standards/scope-3-standard>